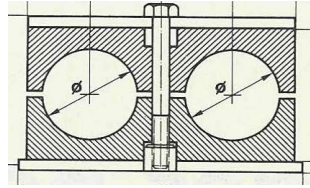
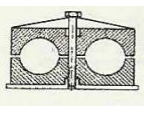
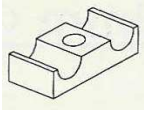
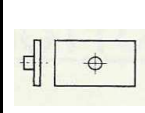
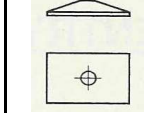



CLAMPS

TWIN - STANDARD IN POLYPROPYLENE



							
GROUP	TUBE BORE	PART NO COMPLETE	COMPLETE	BODY PAIR	WELD PLATE	COVER PLATE	BOLT EACH
	6	HCT-106L					
	6.4	HCT-106.4L					
	8	HCT-108L					
1	9.5	HCT-109.5L	3.61	1.19	1.57	0.67	0.19
	10	HCT-110L					
	12	HCT-112L					
	12.7	HCT-212.7L					
	13.5	HCT-213.5L					
	14	HCT-214L					
2	15	HCT-215L	4.63	1.43	2.17	0.84	0.19
	16	HCT-216L					
	17.2	HCT-217.2					
	18	HCT-218L					
	19	HCT-319L					
	20	HCT-320L					
3	21.3	HCT-321.3L	5.19	1.89	2.26	0.85	0.20
	22	HCT-322L					
	25	HCT-325L					
	26.9	HCT-426.9L					
4	28	HCT-428L	5.89	2.28	2.44	0.95	0.22
	30	HCT-430L					
	32	HCT-532L					
	33.7	HCT-533.7L					
5	35	HCT-535L	6.77	3.63	2.83	1.05	0.31
	38	HCT-538L					
	42	HCT-542L					